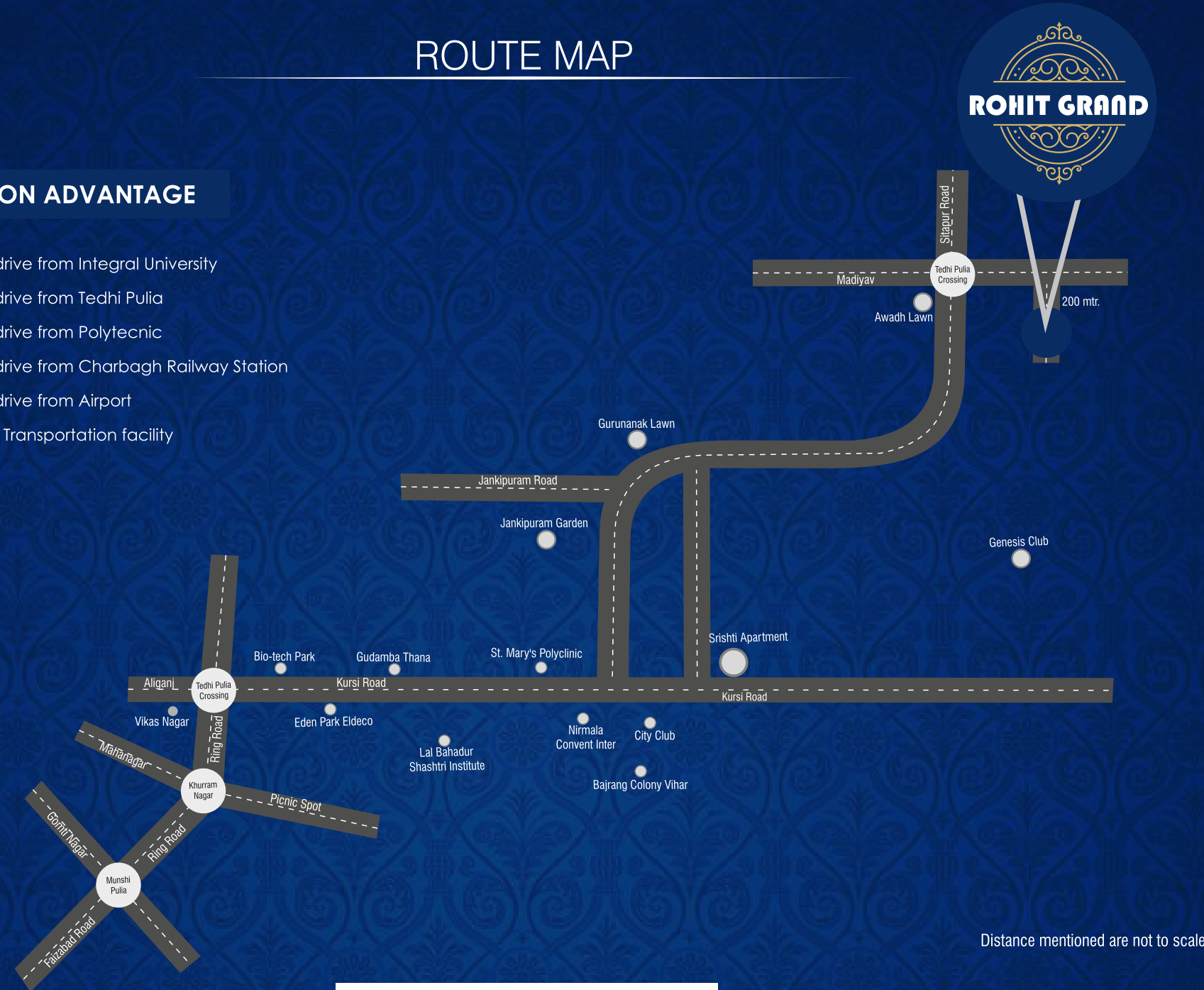


## ROUTE MAP

### LOCATION ADVANTAGE

- 10 minute drive from Integral University
- 07 minute drive from Tedhi Pulia
- 15 minute drive from Polytecnic
- 30 minute drive from Charbagh Railway Station
- 40 minute drive from Airport
- 24x7 Public Transportation facility



Distance mentioned are not to scale



**ROHIT COLONISERS PVT. LTD.**

Site Office: Khasra No. 681, 682 Madiyaon, Jankipuram Extension, Kursi Road, Lucknow UP.

Corporate Office: Rohit Heights, 1/8 Vardan Khand, Adjacent CMS School, Ext. Gomti Nagar, Lucknow

Email: rohitgroup123@gmail.com | Website: www.rohitgroup.co.in

**CONTACT: +91 9696 322 322**

**All LEADING BANK APPROVED**



1, 2 & 3 BHK PREMIUM APARTMENTS

JANKIPURAM EXT. KURSI ROAD, LUCKNOW

# THE FUTURE HAS ARRIVED..





*a space that takes you away  
from seriousness into lively enjoyment  
a place that removes suffocation  
to let you feel the air of liberation  
a home that dissolves all your restrictions  
and gives a platform to your expressions*

Rohit Group of companies laid its foundation on passion of building infrastructure for people. The companies has been working extensively in the building construction domain for more than 10 Years and in all these years Rohit Group of companies has delivered excellence in the field of providing shelters to many families. The core belief of company is to deliver happiness to families in form of their home. With Rohit Group of Companies the dream of having the own home has come true. We are being constantly in touch with the families to whom we have delivered their dream homes. We have successfully delivered to

5 Projects and to 300 and counting families their homes. At our corporate office we have separate department for each vertical like land acquisition, documentation, registry, Legal, sales ,delivery, amenities, customer grievances, Post sales communication and many. We have around 150 + employees looking after the complete satisfaction of each and every customer. We believe that customer satisfaction with fetch us new business and this is the reason we have a separate customer helpdesk which look after the customers queries and suggestion pre and post sales.

## PROJECT SUCCESSFULLY DELIVERED IN LUCKNOW



### MAA APARTMENT

2C, 32,33, Sector 2, Vikas Nagar  
(In Established 2008)



### ROHIT SQUARE

2C, 24,25, Sector 2, Vikas Nagar  
(In Established 2009-2010)



### ROHIT TOWER

2 GH-1 Sector 2, Vikas Nagar  
(In Established 2009-2010)



### ROHIT PARADISE

13 AP, Sen Road, Charbagh  
(In Established 2012)



### ROHIT RESIDENCY

4-C Vikalp Khand Gomti Nagar  
(In Established 2016)



## LUXURY LIFESTYLE AMENITIES

Rohit Grand offers world class amenities that include a Badminton Court, Gym, Kids Play Area and a beautiful landscaped Garden providing a relaxing experience in the middle of the city. Rohit Grand provides a quality comfort living at its finest and you can enjoy your leisure time by seeing lush green surroundings with mystical landscape.

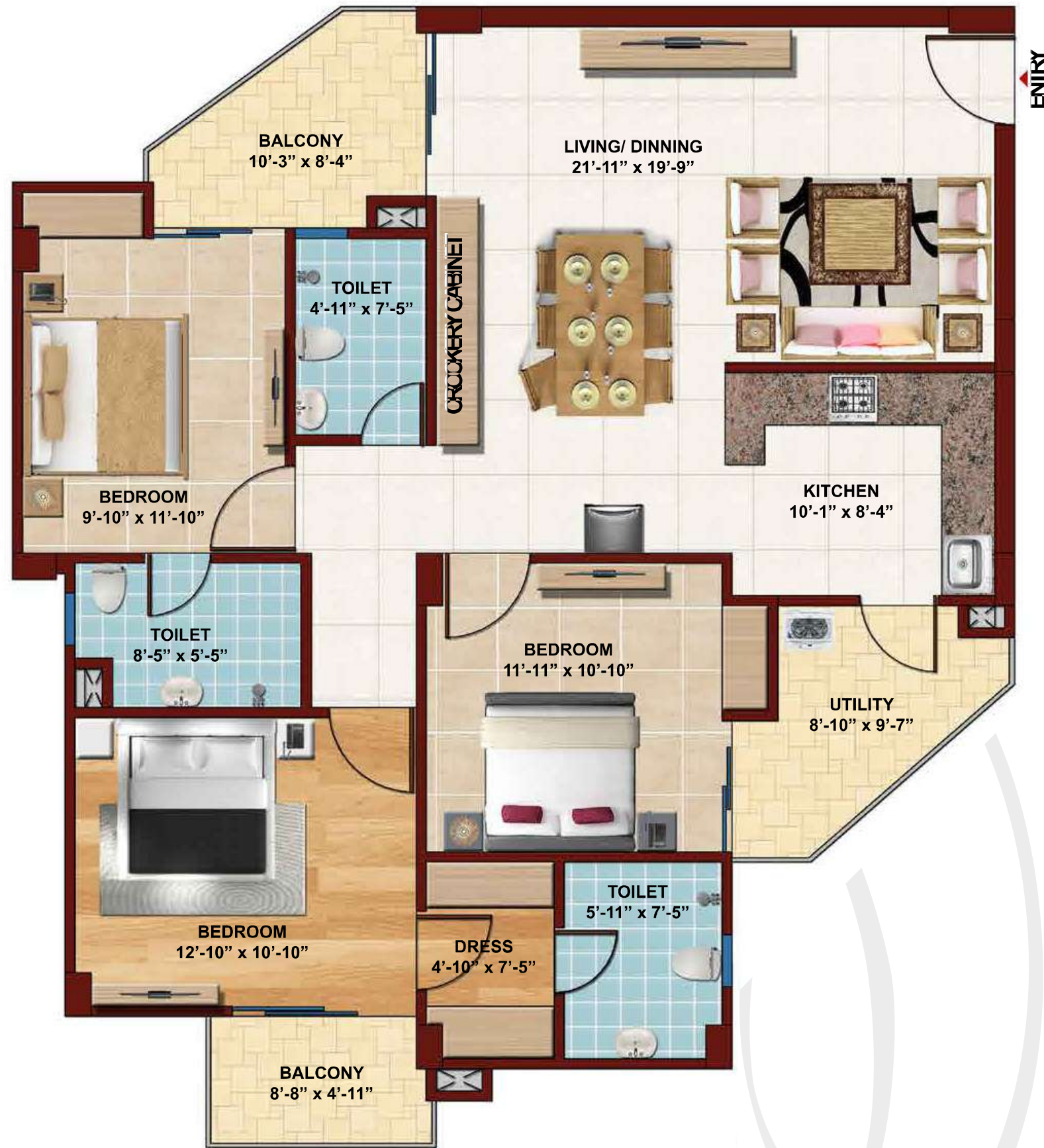




# ROHIT GRAND

1, 2 & 3 BHK PREMIUM APARTMENTS  
KURSI ROAD, LUCKNOW





UNIT : 3BHK (TYPE - 1)  
 Saleable Area : 1515 sq.ft  
 Carpet Area : 1053.29 sq.ft  
 Build up Area : 1289.37 sq.ft  
 Covered Area : 1117.21 sq.ft  
 Balcony Area : 172.16 sq.ft

3 BHK FLOOR PLAN TYPE -1



UNIT : 3BHK (TYPE - 2)  
 Saleable Area : 1472 sq.ft  
 Carpet Area : 1046.41 sq.ft  
 Build up Area : 1252.78 sq.ft  
 Covered Area : 1110.54 sq.ft  
 Balcony Area : 142.24 sq.ft

3 BHK FLOOR PLAN TYPE -2



2 BHK FLOOR PLAN

1 BHK FLOOR PLAN TYPE -1

## SPECIFICATION



1 BHK FLOOR PLAN TYPE -2

### STRUCTURE

- Earthquake Resistant Structure.
- RCC framed structure conforming to BIS seismic codes.
- Environment friendly design

### FLOORING AND FINISHING

- Living / Dining: Vitrified Tiles
- Bed Room: Vitrified Tiles
- Kitchen: Vitrified Tiles & 2 ft. ht. Wall Tiles on Kitchen Top
- Toilet: Antiskid Ceramic Tiles & Wall Tiles up to 7 Fit.
- Balcony: Antiskid Ceramic Tiles.

### WALL PAINTING

- Internal walls Living / Dining / Bedrooms finished with putty(cement based),and Asian / Berger superior grade paint.
- External Grade Acrylic Emulsion / Textured paint finish.
- Lift Lobby : Selected marble / Vitrified Tiles / Granite cladding with plastic paint.

### WINDOWS

- WINDOWS - UPVC sliding glazed windows with one wire mesh panel.

### DOORS

- Hard wood frame with flush doors in enamel paint finish.
- UPVC framed sliding doors with glazed panels.

### ELECTRICAL AND COMMUNICATION

- Multi Standard Copper wiring in concealed conduit with provision for light points and standard modular switches with power point
- Provision for Telephone point in drawing, dining, T.V. Socket in drawing room and master bedroom

### PREMIUM FEATURES

- Beautifully Landscaped greenery with breathtaking flora & fauna.
- Badminton court.
- Gym Area
- Outdoor playground with equipment.
- 24 hour water supply.
- 24x7 Security
- Power Back-up at common passage area.
- Ample parking space on Stilt, Basement & Open Parking.
- 2 Nos of Passenger Lifts in each Tower.
- Intercom facility from Guard room to all the flats.
- Access control through CCTV
- Provision of fire fighting system as per govt. norms.
- Convenient shop within the campus for daily needs and spa/ salon.



TO KURSI ROAD

18.00 M. WD. R O A D